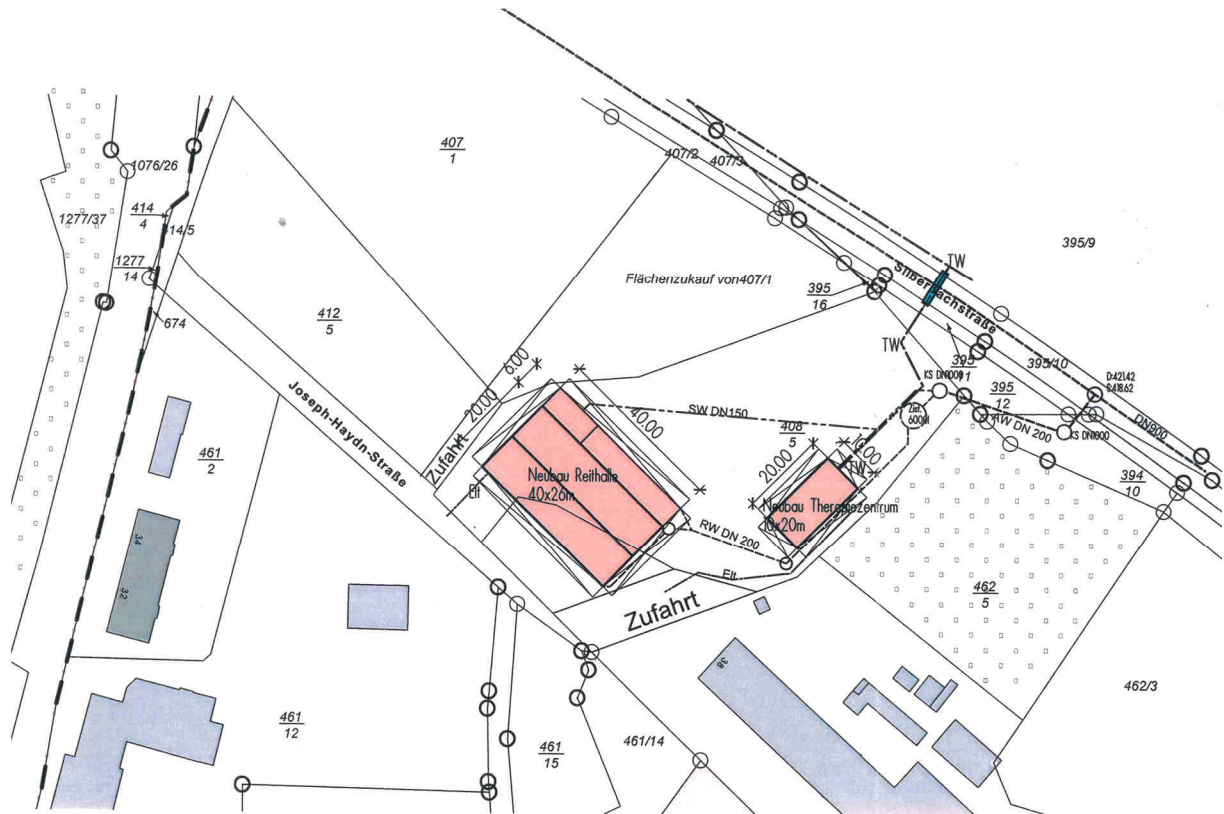


Anlage 1 zur Beschlussvorlage 055/2023/60

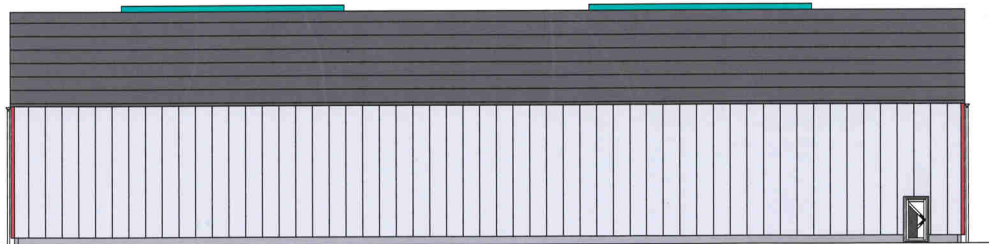


Lageplan

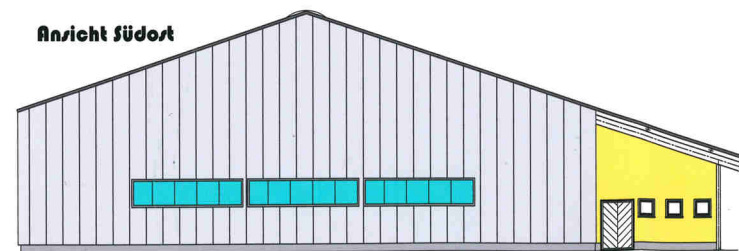
Ansicht Nordost



Ansicht Südwest



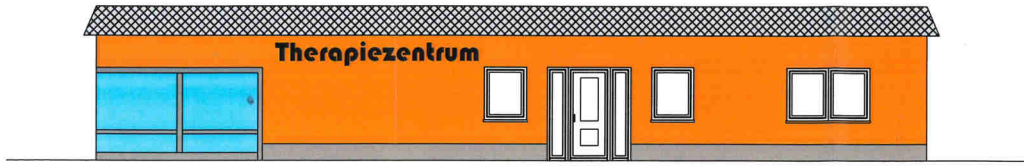
Ansicht Südost



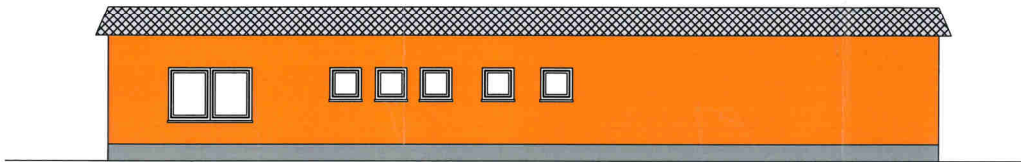
Ansichten Reithalle

Anlage 1 zur Beschlussvorlage 055/2023/60

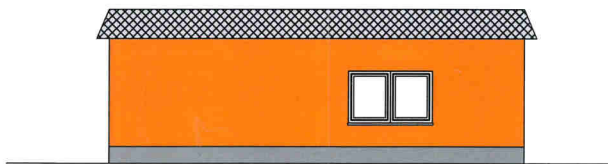
Ansicht Nordwest



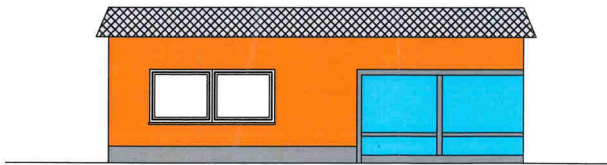
Ansicht Südost



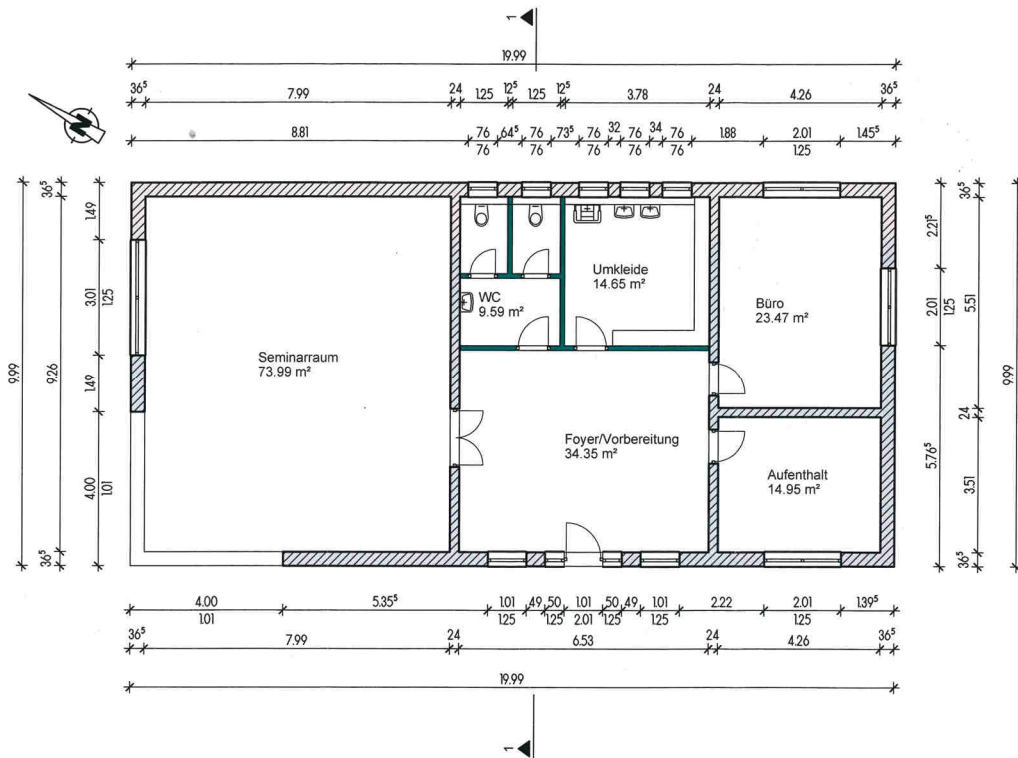
Ansicht Nordost



Ansicht Südwest



Ansichten Therapiezentrum



Grundriss Therapiezentrum